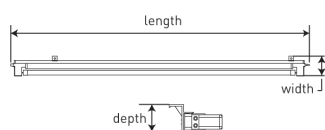
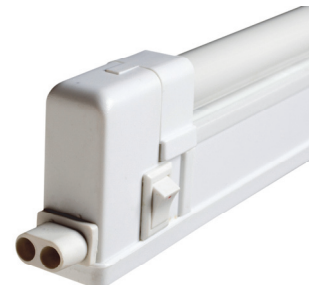


KITCHEN & FURNITURE

T4 FLUORESCENT STRIPLIGHTS



	LSTR6W	LSTR8W	LSTR16W	LSTR20W	LSTR30W
Watts:	6W	8W	16W	20W	30W
Length(mm):	280	400	530	630	820
Width(mm):	17	17	17	17	17
Depth (mm):	36	36	36	36	36
Light Output:	200lm	300lm	880lm	1200lm	1850lm
Guarantee:	2	2	2	2	2

Predominantly used as under cabinet lighting, this range of high quality fluorescent striplights utilise the latest energy efficient electronic ballast technology and provide an ideal solution for domestic lighting applications. They can be linked together to a maximum of 6 fittings using the butt connection or the link cable to produce longer lighting solutions. Due to the ultra-slim profile, the fittings are particularly suitable for:

- Cabinet displays
- Kickboard lighting
- Kitchen wall units
- Under counter
- Cornice lighting
- Workbench lighting

FEATURES

- Complete kit:
 - Fitting with male and female butt connectors
 - Plug-in power cord
 - 500mm linking cables
 - Vertical & horizontal mounting clips
 - 2700k warm white triphosphor tube
 - Clip and rotate tube removal
 - Link up to 6 fittings together

- Available in 5 different wattages and lengths

- Electronic control gear

- Integral switch

- Slimline profile

- Polycarbonate body

- IP20

- 2 year guarantee

BENEFITS

- Nothing else required
- Fast and simple installation and direct linking of fittings
- Saves time – quick and simple mains connection
- Space the fittings out if required
- Enables light to be directed downwards or backwards
- Subtle warm ambience
- Safe and simple tube removal and replacement
- Can provide equivalent of a single 6 meter tube

- Cater for most cupboard or unit sizes to ensure uniform light distribution

- Instant flicker free start and running
- Low maintenance long life (up to 5 years @ 3 hours per day)
- Instant light and pleasant lighting environment
- Energy efficient – low running costs
- 50% more efficient than switchstart

- Switch all fittings on with main switch or can individually switch fittings

- Luminaire can easily be hidden behind pelmut

- Durable and long lasting

- Suitable for internal applications

- Piece of mind – fit and forget

PLEASE NOTE – INFORMATION CONTAINED IN THIS DOCUMENT IS SUBJECT TO CHANGE WITHOUT PRIOR NOTICE